

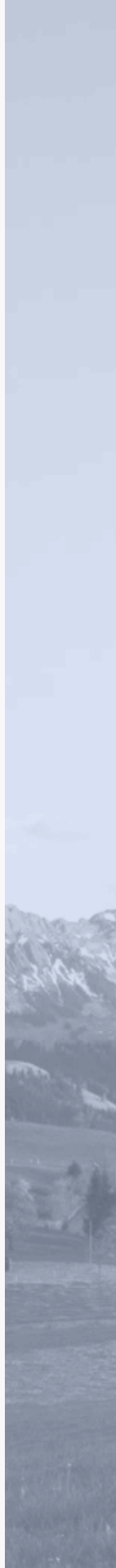


ESG Impact and Corporate Responsibility Data

2022 - 2025

List of Topics

- 1 Company commitment
- 2 Sustainability management
- 3 ESG Strategy
- 4 Company's carbon footprint
- 6 Energy
- 7 Waste
- 8 Water



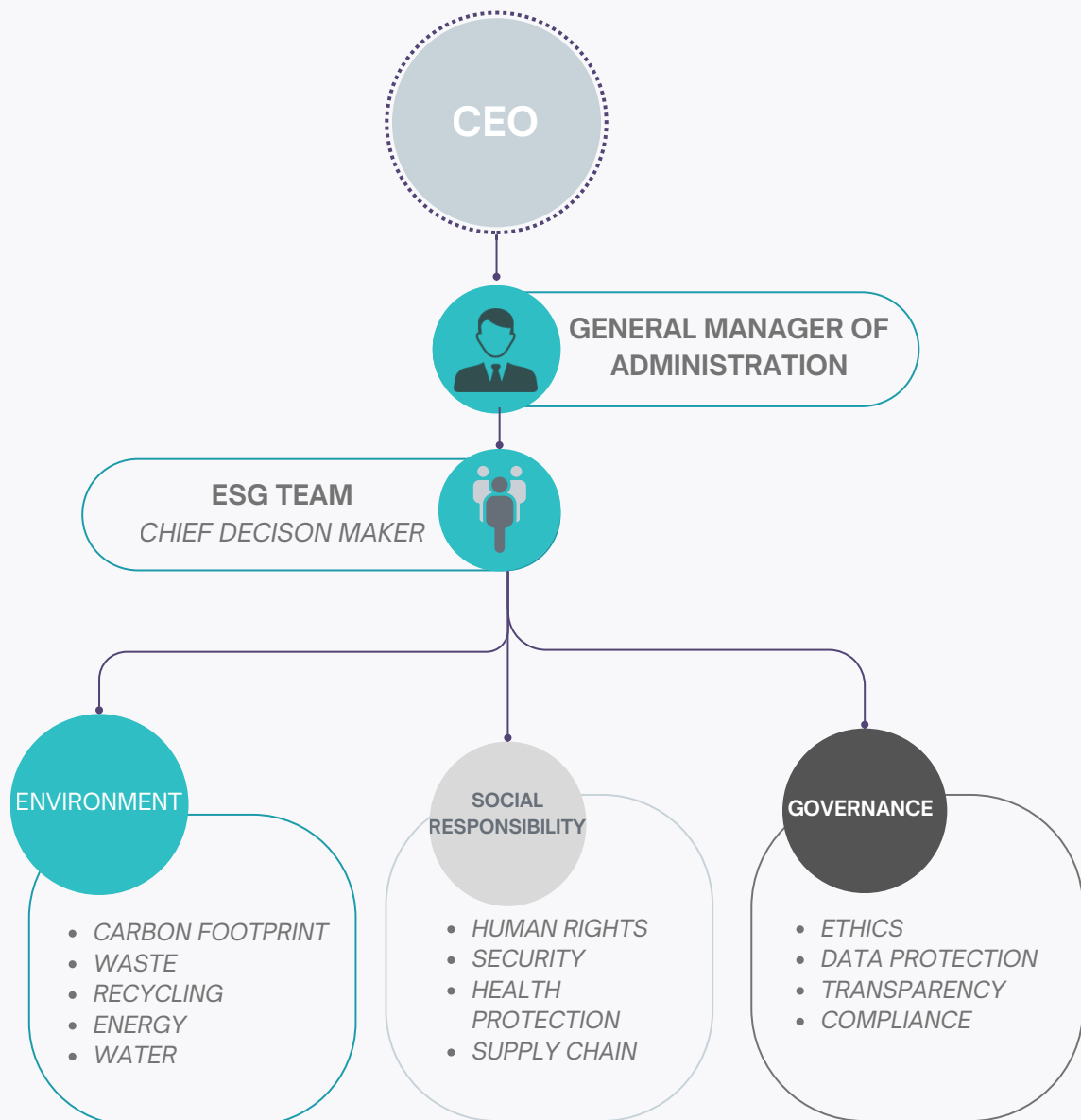
Commitment to reducing the company's carbon footprint

PLAKOR CZECH is committed to setting goals emission reduction targets by 2030 in line with the goal of limiting global warming to 1.5 °C. This commitment is based on the Science Based Targets (SBTi) initiative, which helps companies set science-based emissions targets with real and measurable impact on combating climate change.

Our company actively measures its carbon footprint and is constantly looking for ways to reduce it effectively. This is part of a broader plan for sustainability and responsible business in line with global environmental goals.

Sustainability management

The ultimate responsibility for the strategic direction on sustainability lies with the executive management, which approves the ESG objectives and priority areas. Coordination and implementation of activities is provided by the ESG team, which operates across company departments.



ESG Strategy

PLAKOR CZECH builds its ESG (Environmental, Social, Governance) strategy on three key objectives: sustainable growth, improving the quality of life and long-term responsibility towards nature, people and society. ESG is a framework that integrates environmental, social and governance principles into one whole.

1 | Responsibility to nature

- Reducing greenhouse gas (GHG) emissions
- Responsible use of raw materials
- Efficient waste management, minimising impacts on land, water and air.
- Supporting research and development in the field of eco-innovation (ECO R&D)

2 | Respect for society

- Ensuring health and safety at work
- Respect for human rights
- Prohibition of child and forced labour throughout the supply chain
- Supporting local communities and social contribution

3 | Responsible Governance

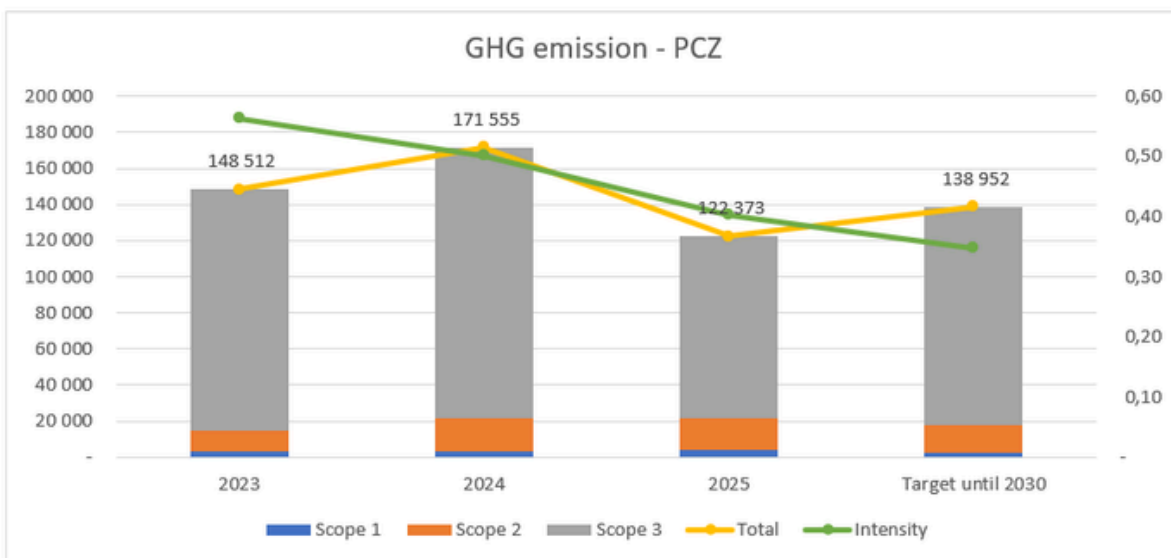
- Ethical decision-making
- Supply chain management with respect to ESG risks, including declaration of origin of raw materials
- Strengthening IT security and data protection
- Strict compliance with anti-corruption, anti-money laundering and anti-counterfeiting rules

Company's carbon footprint

The Company's greenhouse gas (GHG) emissions are monitored and quantified in accordance with the principles and requirements of the GHG Protocol and ISO 14064. The inventory covers direct emissions from owned or controlled sources (Scope 1), indirect emissions associated with the generation of purchased electricity and energy (Scope 2), as well as relevant categories of other indirect emissions occurring across the value chain (Scope 3).

The chart below presents the development of the Company's carbon footprint over the period 2023–2025, providing a transparent overview of emission trends and supporting the evaluation of decarbonization efforts. The calculation methodology, system boundaries and emission factors are applied consistently to ensure comparability between reporting years. The reported GHG emissions have been independently verified by a third party in accordance with the requirements of the GHG Protocol, providing additional assurance regarding the completeness, accuracy and reliability of the disclosed data.

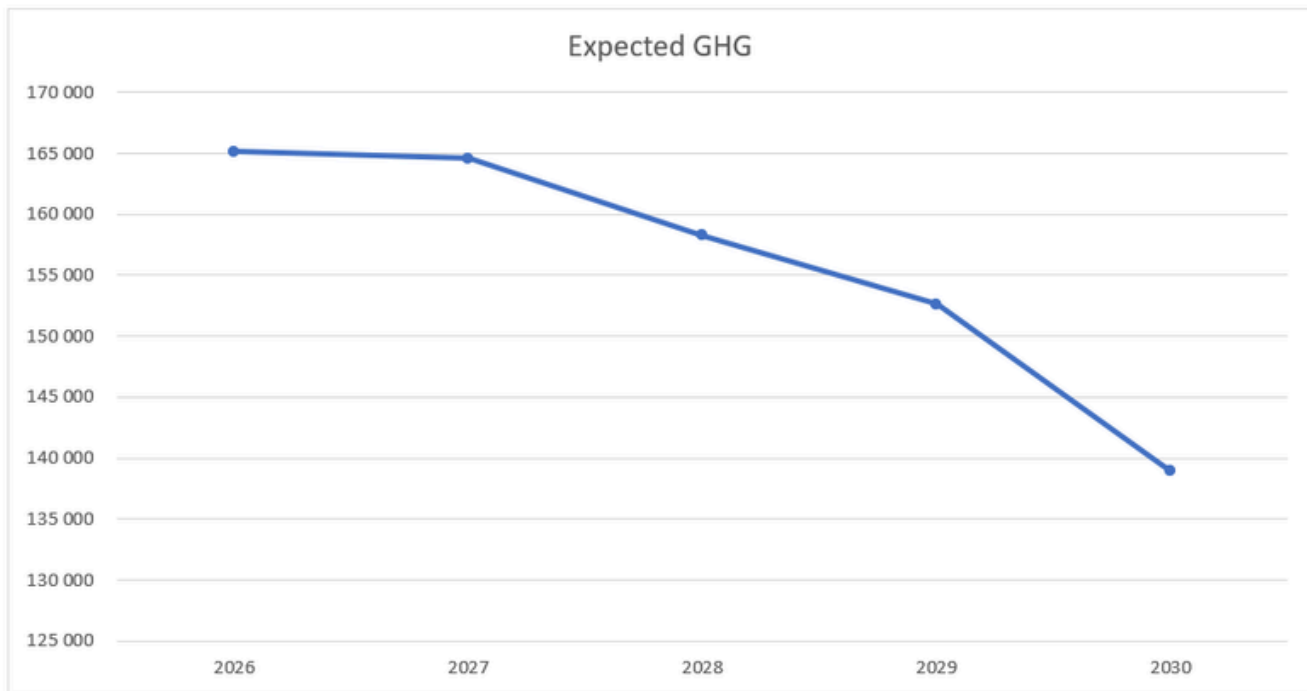
Result	2023	2024	2025	Target until 2030	Unit	
GHG	Scope 1	2 896	3 332	3 832	2 699	tCO2e
	Scope 2	11 952	18 556	17 618	15 029	tCO2e
	Scope 3	133 664	149 667	100 923	121 224	tCO2e
	Total	148 512	171 555	122 373	138 952	tCO2e
Turnover	263 793	342 311	303 565	400 000	TEUR	
Intensity	0,56	0,50	0,40	0,35	tCO2e/TEUR	



Company's carbon footprint

Our current short-term goal is to reduce our overall carbon footprint by 20% by 2030 compared to the base year. This goal is preliminary and will be further verified by experts in accordance with the Science Based Targets initiative (SBTi) methodology. The target below is therefore a working version that is currently in the process of calculation and validation.

Plan	2024	2026	2027	2028	2029	2030
Expected GHG	171 555	165 164	164 573	158 265	152 603	138 952
Target	-	3,73%	0,36%	3,83%	3,58%	8,95%
Remark	Base year					Target year

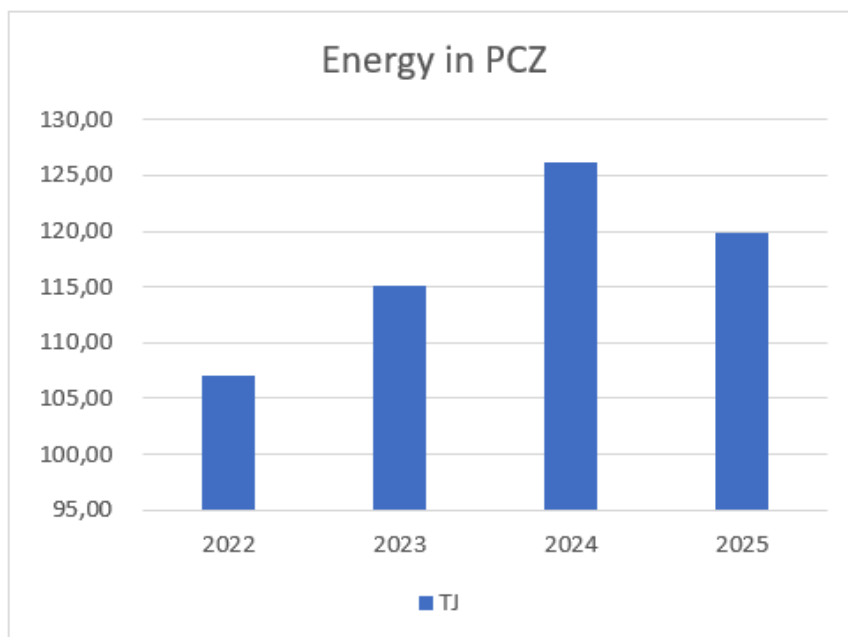


Electricity consumption

The graph below shows the year-on-year development of electricity consumption in 2022 - 2025 expressed in terajoules (TJ).

The recorded increase reflects growth in production or operating capacity and is an important indicator for monitoring a company's environmental performance. Electricity consumption is a significant component of indirect greenhouse gas emissions under Scope 2 of the GHG Protocol. These values serve as a basis for monitoring the effectiveness of measures to reduce energy intensity and carbon footprint.

	2022	2023	2024	2025
MWh	29 726	31 985	35 068	33 296
TJ	107,01	115,15	126,24	119,87
GJ	107 013,60	115 146,00	126 244,80	119 866,62



Increased electricity consumption in recent years also highlights the importance of implementing energy management as part of the company's broader climate strategy.

Waste overview

The Company applies the principles of the waste hierarchy, with a focus on waste prevention, recycling and the responsible treatment of waste streams. Waste generation and treatment are continuously monitored to support resource efficiency and compliance with applicable regulations.

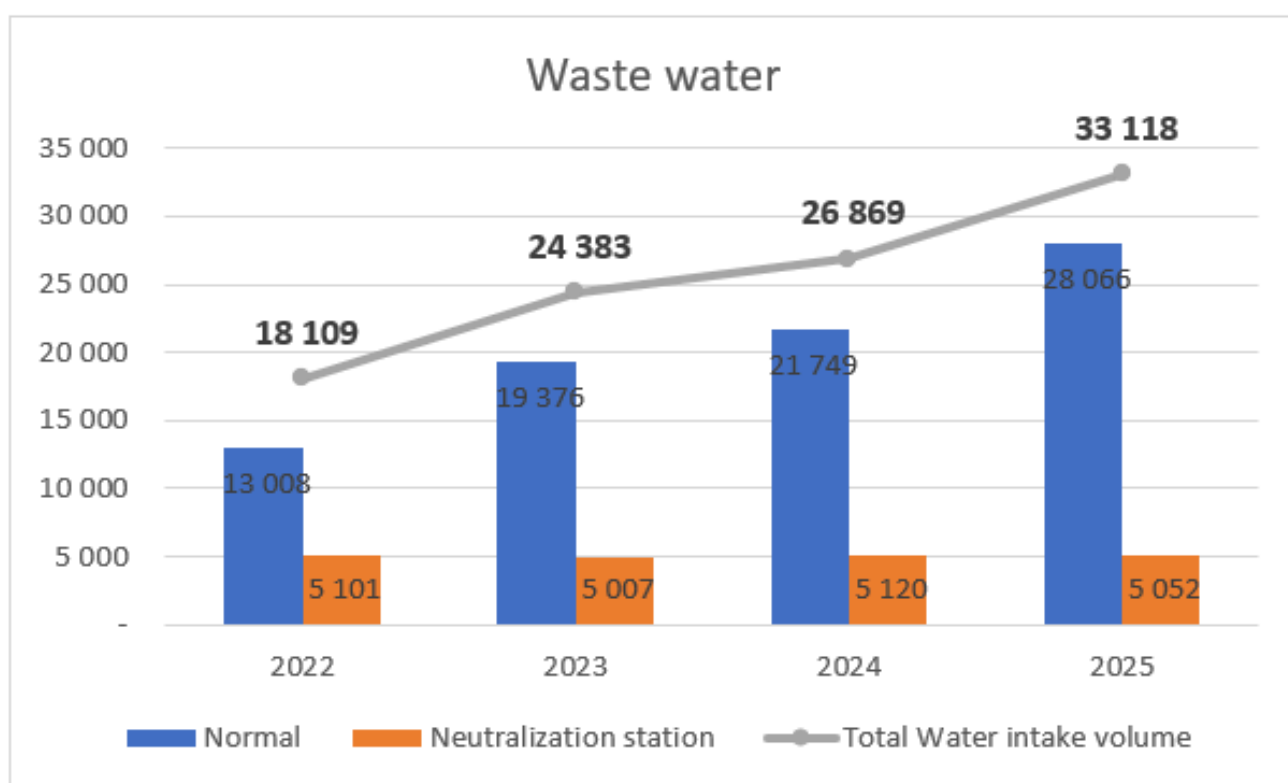
The table below presents the amounts of general and hazardous waste by treatment method. Recycling remains the primary waste management route, accounting for the majority of waste generated throughout the reporting period. Total waste amounted to 5,434 tonnes in 2025, slightly below the 2024 level. Landfilling continued to decrease, while the share of recycled waste remained high, reflecting the Company's commitment to circular economy principles and responsible waste management.

			2022	2023	2024	2025	Unit
Waste	General waste	Incineration	-	-	-	-	Ton
		Landfill	94	94	128	107	Ton
		Recycling	1 808	1 933	2 401	2 159	Ton
		Sub total	1 902	2 027	2 529	2 266	Ton
	Dangerous waste	Incineration	194	167	186	303	Ton
		Landfill	902	742	713	653	Ton
		Recycling	1 711	1 605	2 137	2 212	Ton
		Sub total	2 807	2 514	3 035	3 168	Ton
	Waste total	Incineration	194	167	186	303	Ton
		Landfill	996	836	841	760	Ton
Recycling		3 519	3 538	4 537	4 371	Ton	
Grand Total		4 709	4 541	5 564	5 434	Ton	
Waste water	Normal		13 008	19 376	21 749	28 066	m ³
	Neutralization station		5 101	5 007	5 120	5 052	m ³
	Total Water intake volume		18 109	24 383	26 869	33 118	m³



Water consumption, wastewater quality from the neutralization station

The Company monitors wastewater generation to ensure regulatory compliance and efficient water management. The chart below shows wastewater volumes discharged through the normal system and the neutralization station. Total wastewater volume increased from 18,109 m³ in 2022 to 33,118 m³ in 2025, mainly due to higher volumes discharged through the normal wastewater system, while discharges from the neutralization station remained relatively stable.



The monitoring results show that all monitored parameters of wastewater from the neutralization station were in compliance with the legally established limits during the monitored period and ensure wastewater treatment in accordance with environmental protection requirements.

Neutralizační stanice			Summary			
Parametr	Limity	Unit	2022	2023	2024	2025
pH	6.0 - 9.0		7,2	7,5	7,1	7,0
NL sušené (105°) - nerozpuštěné látky	500	mg/l	3,1	5,1	3,8	50,3
RAS (550°) - rozpuštěné látky	1000	mg/l	483,7	474,3	507,6	527,3
COD - CHSK-Cr chemická spotřeba kyslíku	1000	mg/l	430,4	533,2	406,3	468,9
Celkový fosfor	10	mg/l	0,0	0,1	0,1	0,9
C10 - C40	p-2.	mg/l	0,2	0,2	0,1	1,0
AOX	0,1	mg/l	0,1	0,0	0,0	0,1
Teplota	40°	°C	26,4	25,2	25,8	27,8
BOD	450-500	mg/l	139,0	-	103,0	43,7

CONCLUSION OF THE SUSTAINABILITY REPORT

All the data and calculations presented here have been prepared in accordance with applicable Czech and European legislation, the GHG Protocol methodology and relevant standards, in particular ISO 14064. When setting emission targets and evaluating the carbon footprint, we also base our approach on the Science Based Targets initiative (SBTi) framework, which ensures a science-based approach to reducing emissions in line with the Paris Agreement targets.

The data and results presented in this report serve as the basis for systematic management of the company's environmental and social impacts. They also provide a basis for further setting specific measures, strategic targets and internal ESG reporting.

PLAKOR CZECH is committed to continuous improvement in the area of environmental and social performance, not only because of regulatory requirements, but above all because of the conviction that a sustainable and responsible approach is the basis for long-term competitiveness and the trust of all our stakeholders.

This report is not based on the ESRS (European Sustainability Reporting Standards) methodology or the GRI (Global Reporting Initiative) methodology.